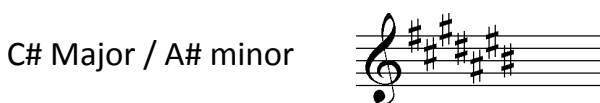
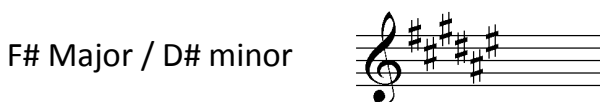
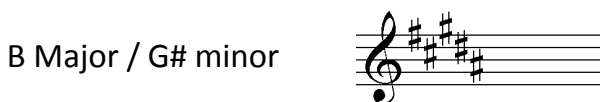
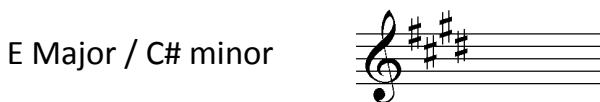
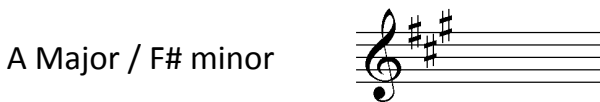
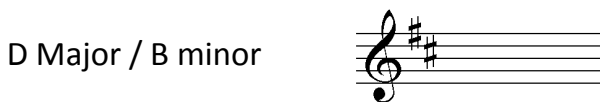
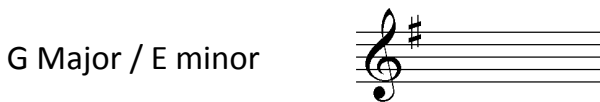
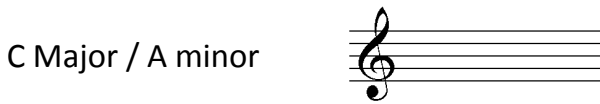
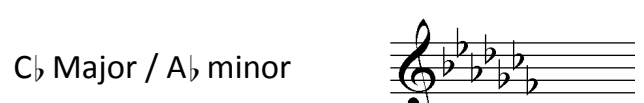
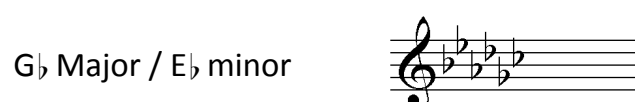
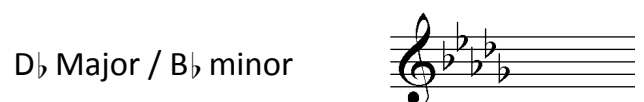
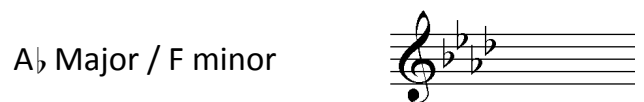
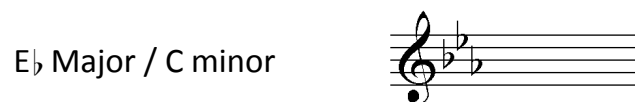
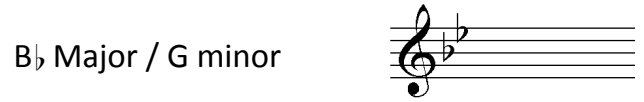


KEY SIGNATURE CHART

KEY SIGNATURES – Sharp keys

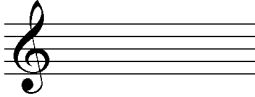


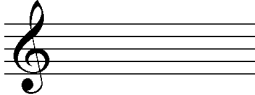
KEY SIGNATURES – Flat keys

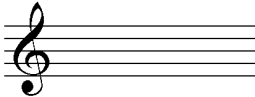


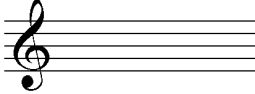
WRITING KEY SIGNATURES 1 Write these key signatures

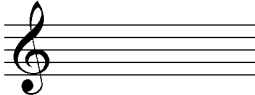
KEY SIGNATURES – Sharp keys

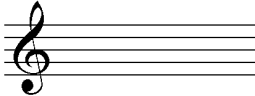
C Major / A minor 

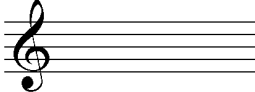
G Major / E minor 

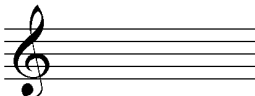
D Major / B minor 

A Major / F# minor 

E Major / C# minor 

B Major / G# minor 

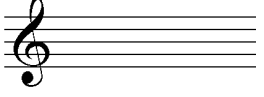
F# Major / D# minor 

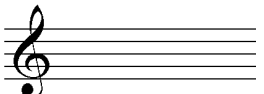
C# Major / A# minor 

KEY SIGNATURES – Flat keys

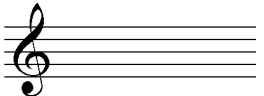
C Major / A minor 

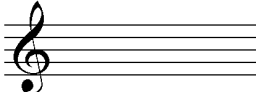
F Major / D minor 

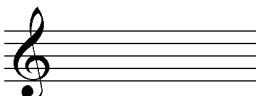
B \flat Major / G minor 

E \flat Major / C minor 

A \flat Major / F minor 

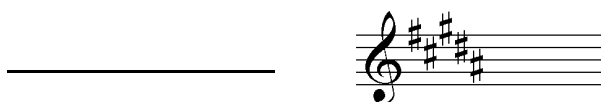
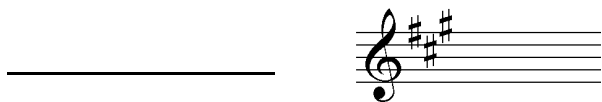
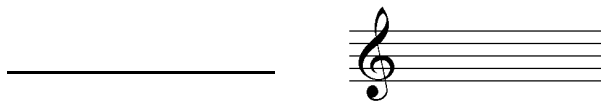
D \flat Major / B \flat minor 

G \flat Major / E \flat minor 

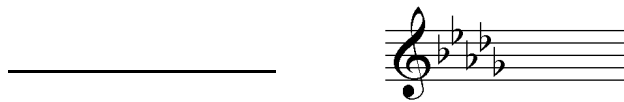
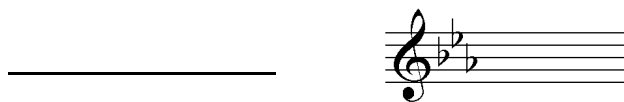
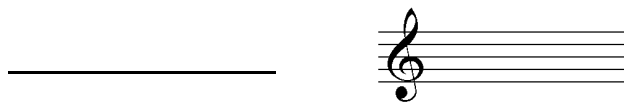
C \flat Major / A \flat minor 

RECOGNISING KEY SIGNATURES 1 Name these key signatures

KEY SIGNATURES – Sharp keys

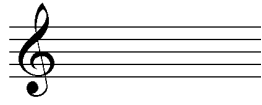


KEY SIGNATURES – Flat keys

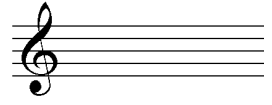


WRITING KEY SIGNATURES 2 Write these key signatures

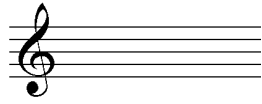
C \flat Major / A \flat minor



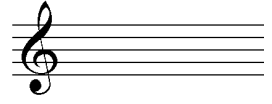
G \flat Major / E \flat minor



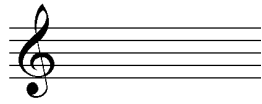
D Major / B minor



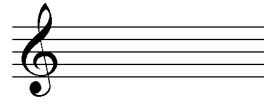
C Major / A minor



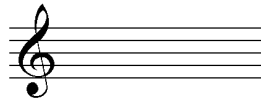
G Major / E minor



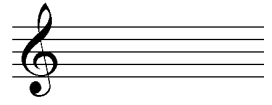
B Major / G \sharp minor



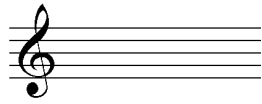
F Major / D minor



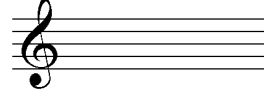
C \sharp Major / A \sharp minor



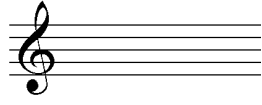
D \flat Major / B \flat minor



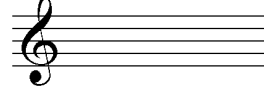
A \flat Major / F minor



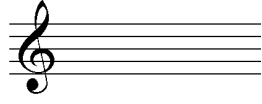
B \flat Major / G minor



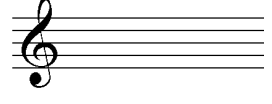
E Major / C \sharp minor



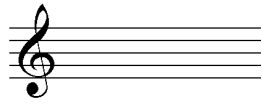
F \sharp Major / D \sharp minor



A Major / F \sharp minor



E \flat Major / C minor



RECOGNISING KEY SIGNATURES 2 Name these key signatures

